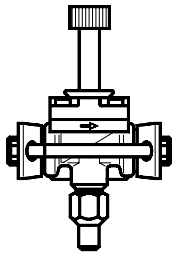
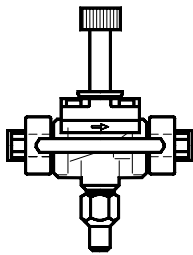


EVRAT 10-15-20

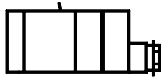
032R9669



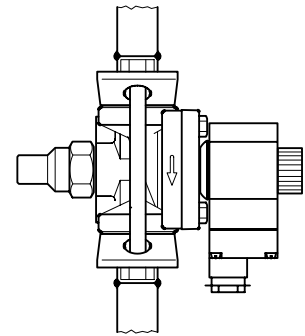
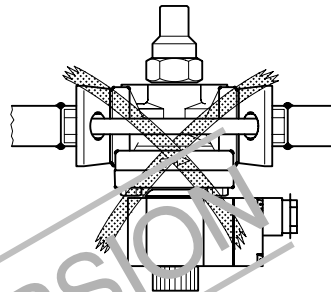
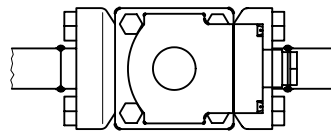
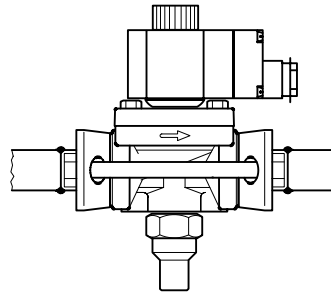
EVRAT 10



EVRAT 15, 20



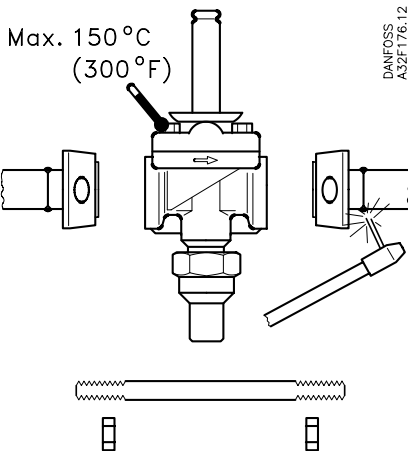
12 V a.c.



DANFOSS
A32F174.12

032R9669


OLD VERSION




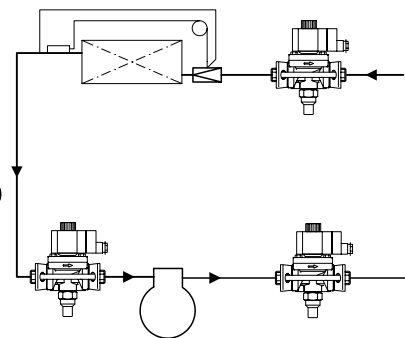
Max. 150°C
(300°F)

DANFOSS
A32F176.12

DANFOSS
A32F175.14

12 W a.c.  $t_{max.} 50^{\circ}C$
(120°F)


 $t_{min.} -40^{\circ}C$ (-40°F)




Min. medium temperature: EVRAT -40°C (-40°F)

Max. medium temperature: EVRAT 105°C (220°F)

Max. working pressure: PB 28bar/MWP 400psig

Max. opening diff. pressure (MOPD):  21bar (300psig)



 Spare part no. Code no.

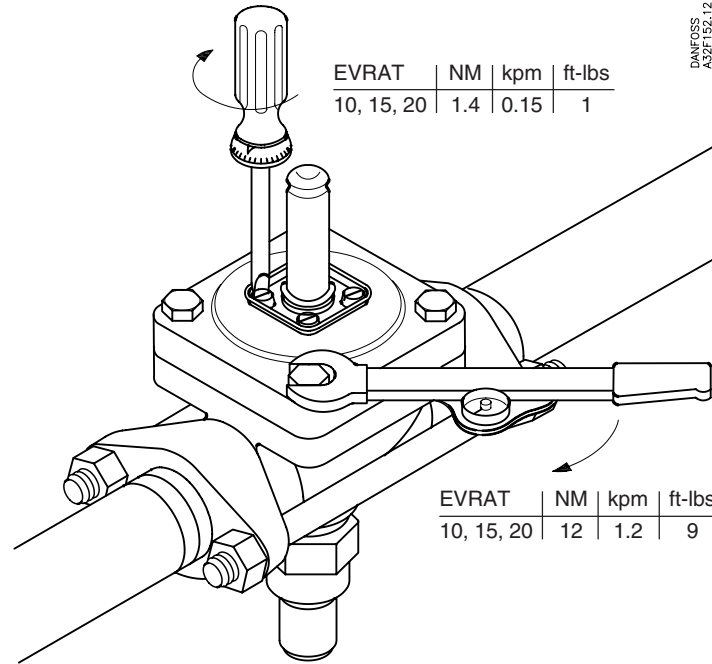
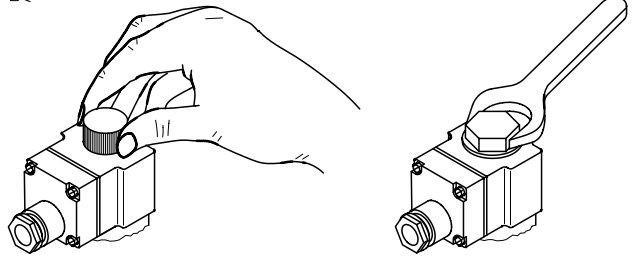
 Volt V ± 10% (a.c.)

 Hz Watt W

 Hz

DANFOSS
A32F178.12

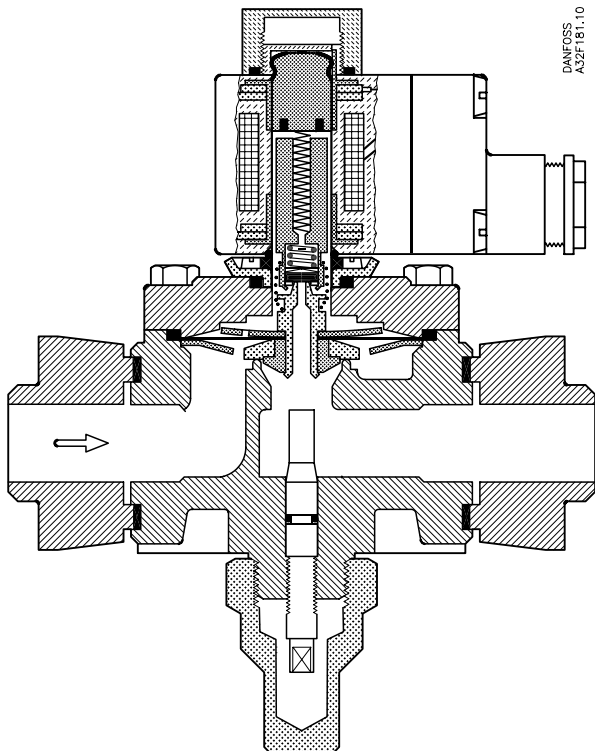
NM	kpm	ft-lbs
1.4	0.15	1



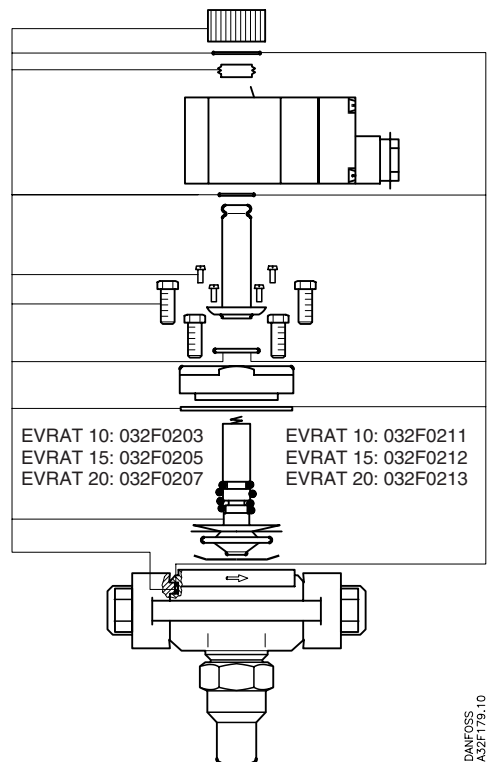
DANFOSS
A32F152.12

EVRAT	NM	kpm	ft-lbs
10, 15, 20	1.4	0.15	1

EVRAT	NM	kpm	ft-lbs
10, 15, 20	12	1.2	9



DANFOSS
A32F181.10



EVRAT 10: 032F0203
 EVRAT 15: 032F0205
 EVRAT 20: 032F0207

EVRAT 10: 032F0211
 EVRAT 15: 032F0212
 EVRAT 20: 032F0213

DANFOSS
A32F178.10